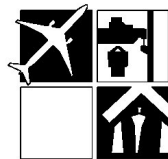


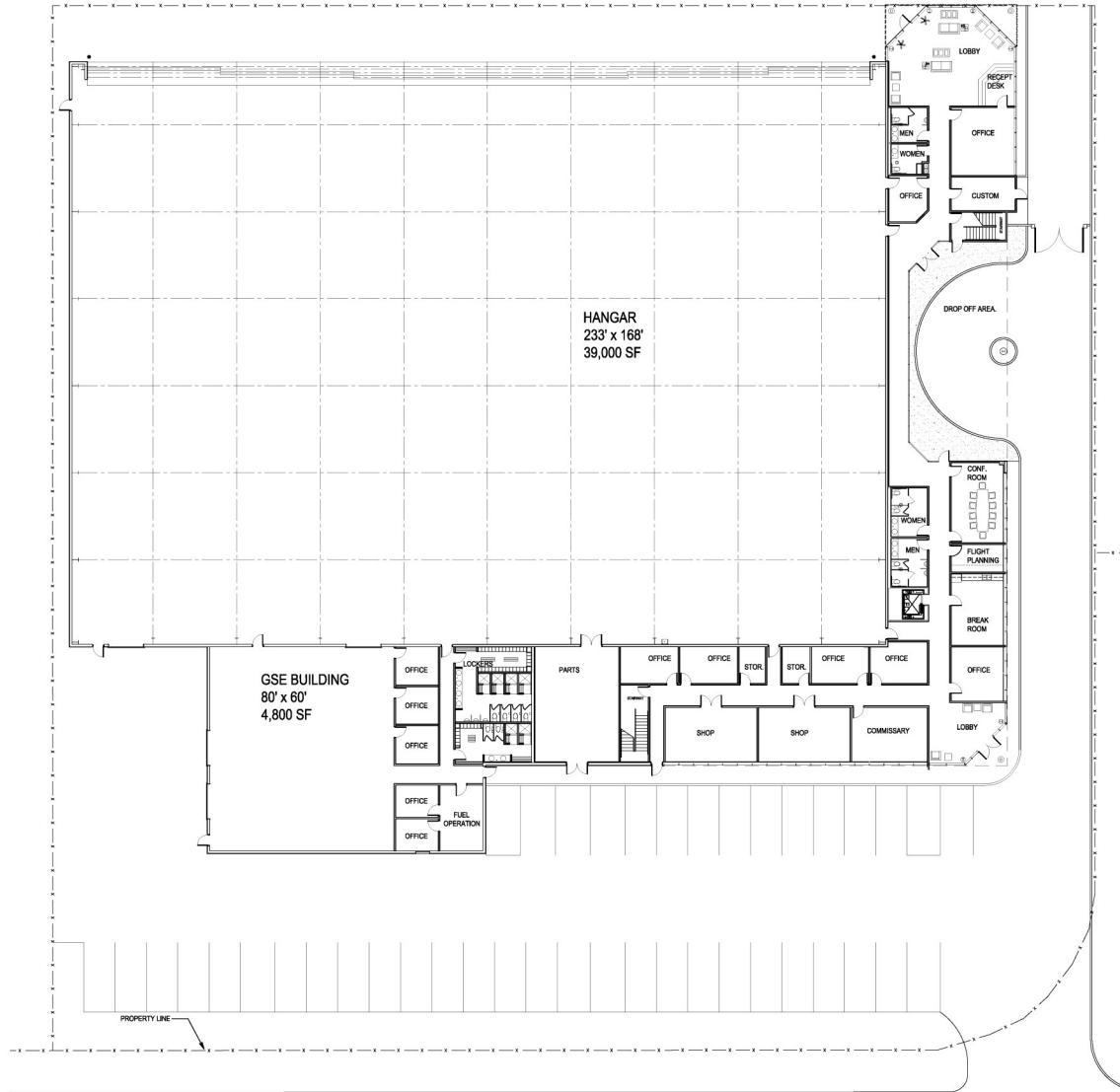
**ARCHITECTURAL
FLOOR PLAN OPTION A**

**PROPOSED NEW HANGAR & OFFICES:
KONA INTERNATIONAL AIRPORT
KAILUA KONA, HAWAII
BRADLEY PACIFIC AVIATION**



bascon
architects—engineers—developers
constructors—construction managers

BASCON, INC.
607—500 Redna Terrace
Cincinnati, Oh. 45215—1171
513/772—1674 FAX: 772—1684
Website: www.basconinc.com



OVERALL FIRST FLOOR PLAN

SCALE: 1/16" = 1'-0"



ISSUE

1 ISSUED FOR OWNER REVIEW 10.27.06



BASCON, INC.
607-500 Reno Terrace
Cincinnati, Oh. 45215-1171
513/772-1674 FAX: 772-1884
Website: www.basconinc.com

architects-engineers-developers
constructors-contractor-managers

**ARCHITECTURAL
FLOOR PLAN OPTION A**

PROPOSED NEW HANGAR & OFFICES
KONA INTERNATIONAL AIRPORT
KAILUA KONA, HAWAII
BRADLEY PACIFIC AVIATION

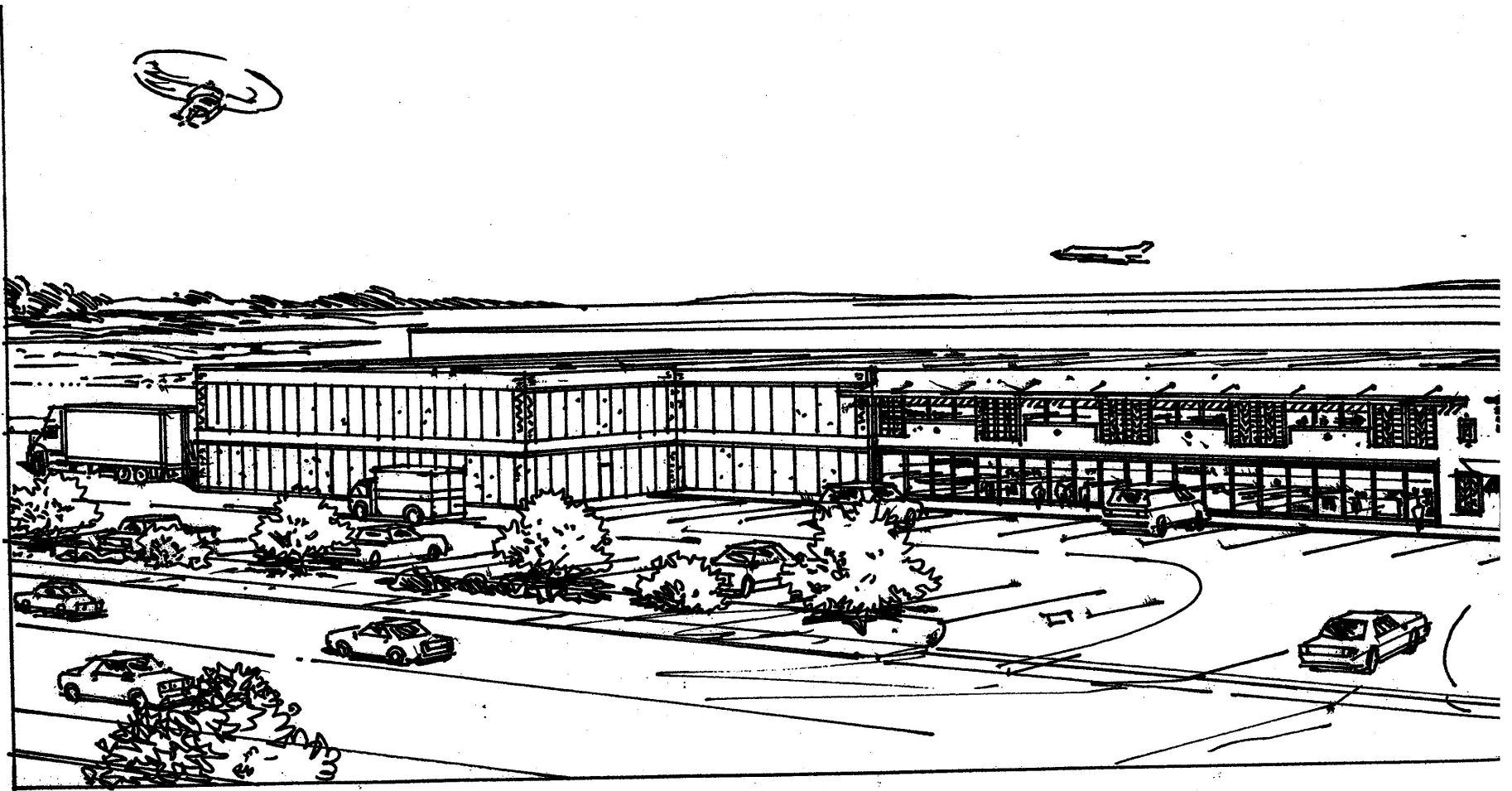
DATE 12-14-06

CHECKED

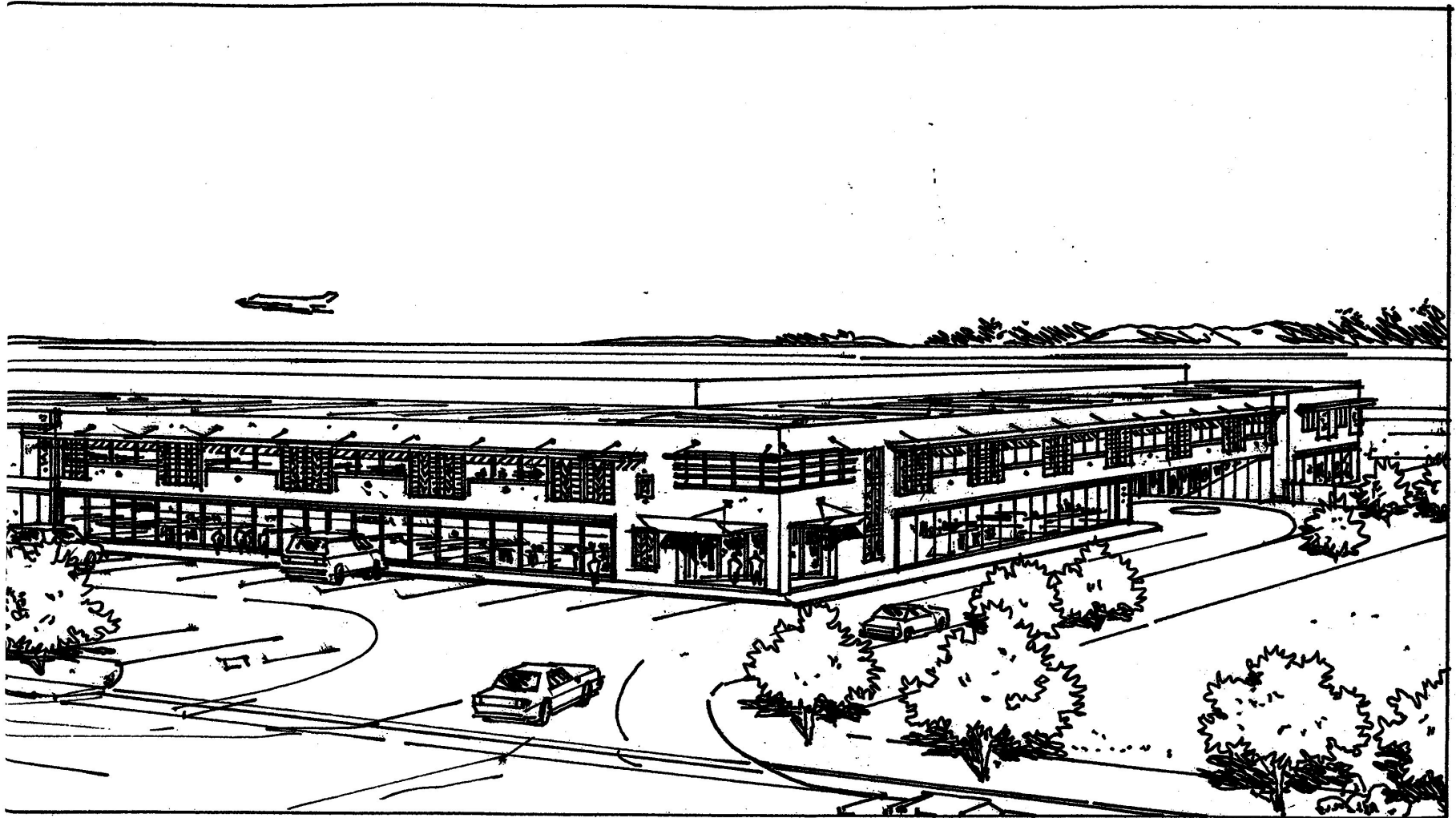
PROJECT NO. 060027

SHEET NO.

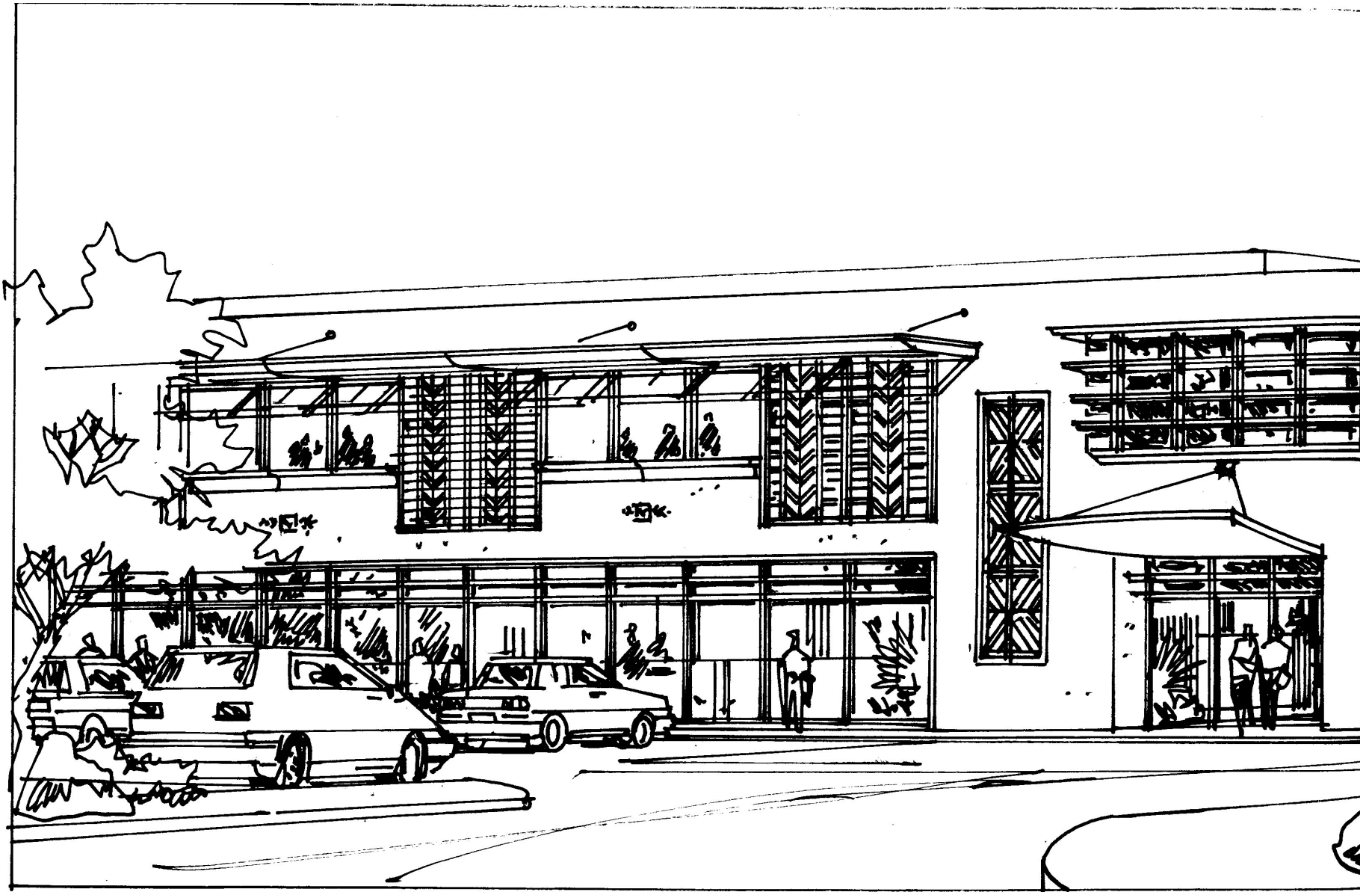
A1.1



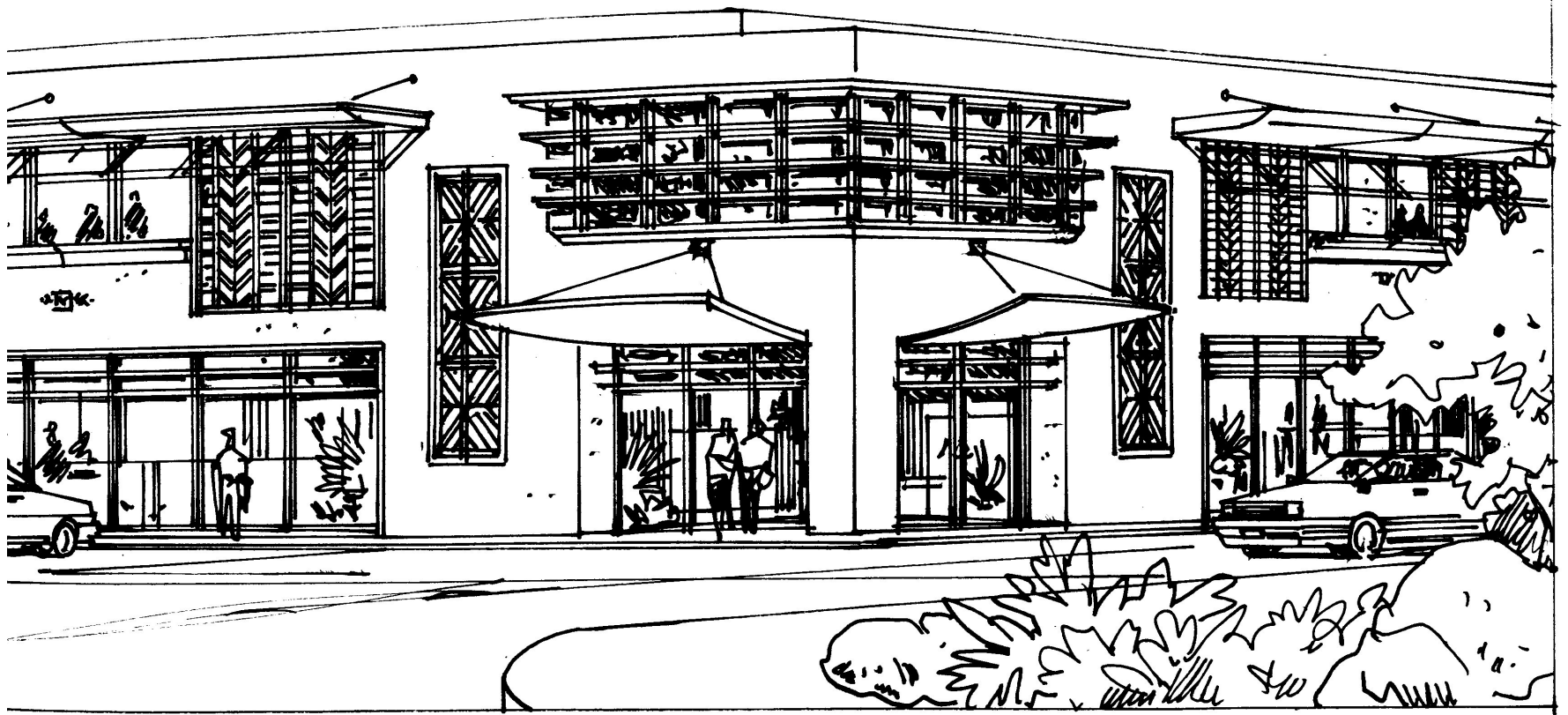
AERIAL PERSPECTIVE



AERIAL PERSPECTIVE



MAIN ENTRY



MAIN ENTRY

